

## Chipboard Timber Screw

**Head Style:** Countersunk Head Ribbed

**Drive Type:** Square

**Screw Point:** AB Standard

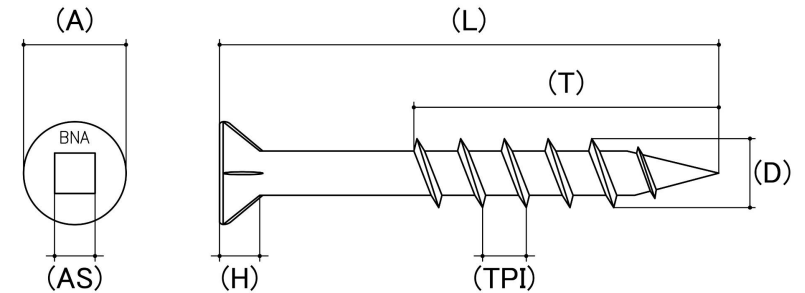
**Material:** Hardened Steel

**Class Grade:** Class 2

**Finish:** Zinc Plated

**Corrosion Protection Level:** Moderate

**Internal External:** Internal



*Cad Drawings shown for graphic representation only.\**

Size	Thread Pitch (TPI)	Thread Type	Product Diameter (D) (mm)		Head Diameter (A) (mm)		Head Height (H) (mm)		Driver Bit Size (AS)	sku (Part Number)
			Min	Max	Min	Max	Min	Max		
8g (4.20mm)	9 TPI	Coarse	4.00	4.20	7.80	8.10	3.60	3.80	SQ2	07CBSQ825
10g (4.80mm)	8 TPI	Coarse	4.65	4.80	8.80	9.20	4.40	4.60	SQ2	07CBSQ10

**Disclaimer:**

Dimensional data and technical information was obtained from publically available sources and not acquired through standard agencies. It has been completed and compiled for reference purposes only; where discrepancies are found they are subject to change without notice. Bolt & Nut Australia makes no warranties or representations regarding the accuracy and validity of the compiled information and data. Contact the relevant standard authorities for accurate and detailed information.

\* Cad Drawings may not reflect diameter, thread length or overall length.

© Bolt & Nut Australia Pty Ltd. All rights reserved.

Version: 21 Aug 2024